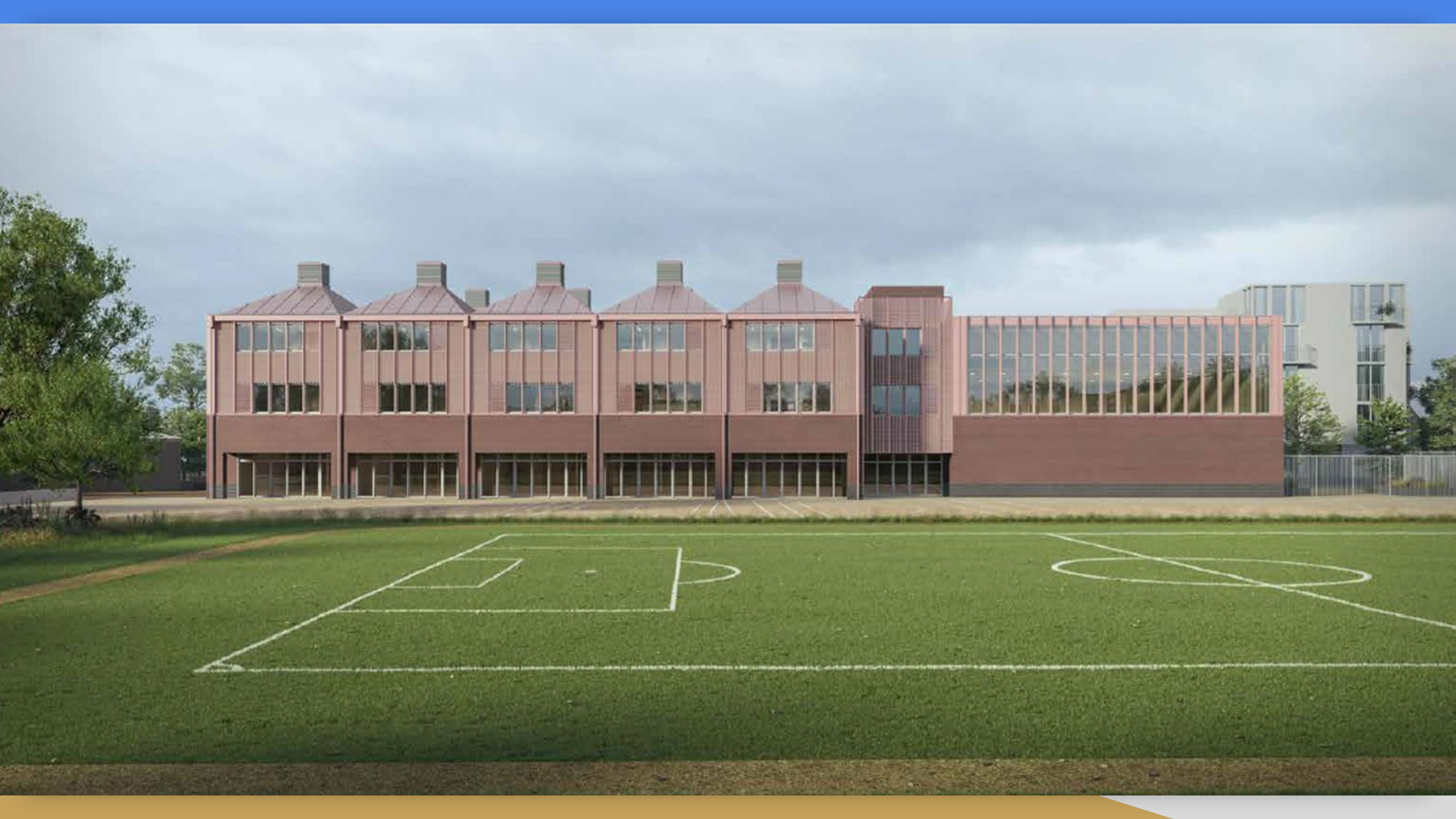


Burlington Build 2023-2024



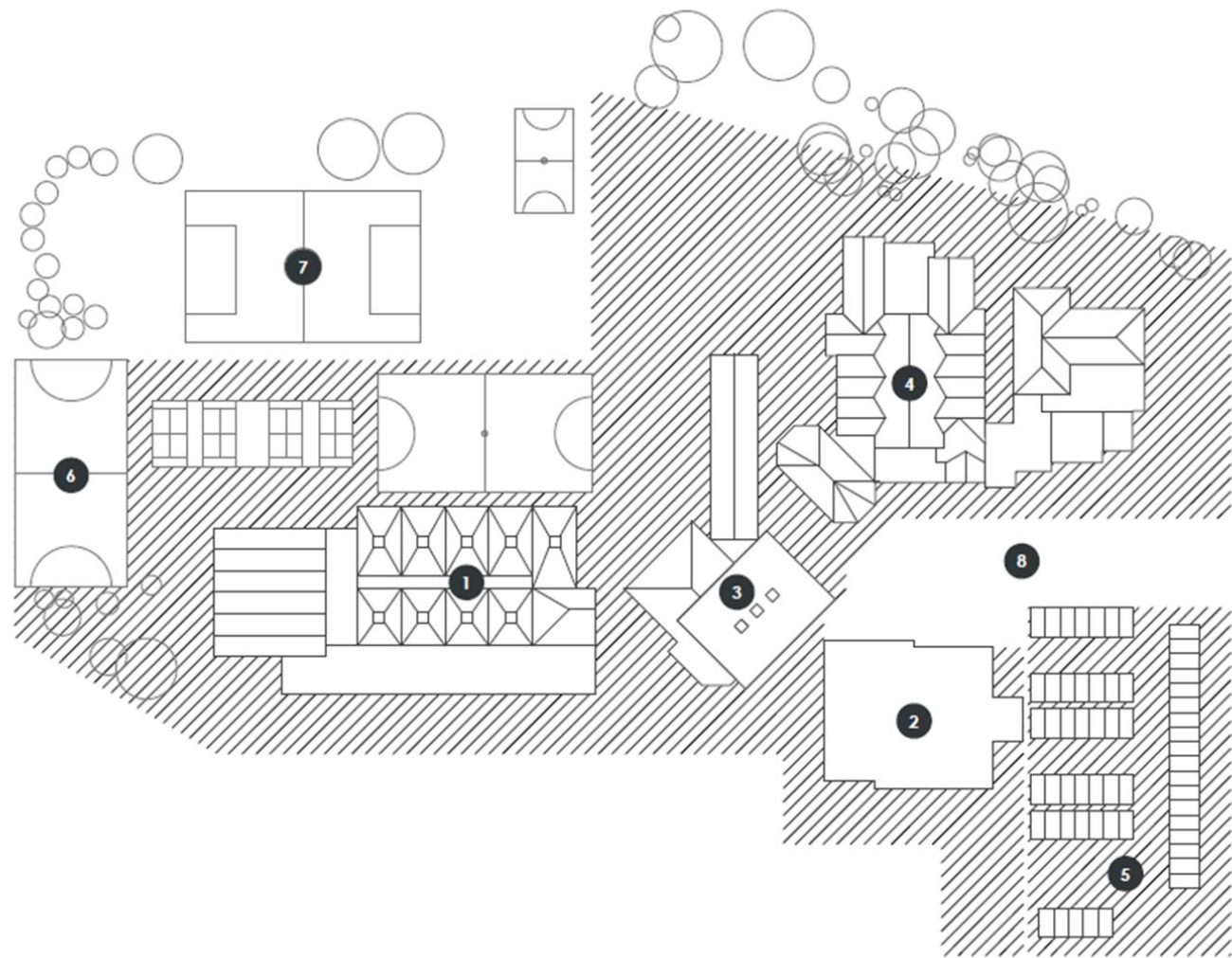
Burlington
Junior
School







Artist's Impression of Entry to Site from Proposed Pedestrian Entry















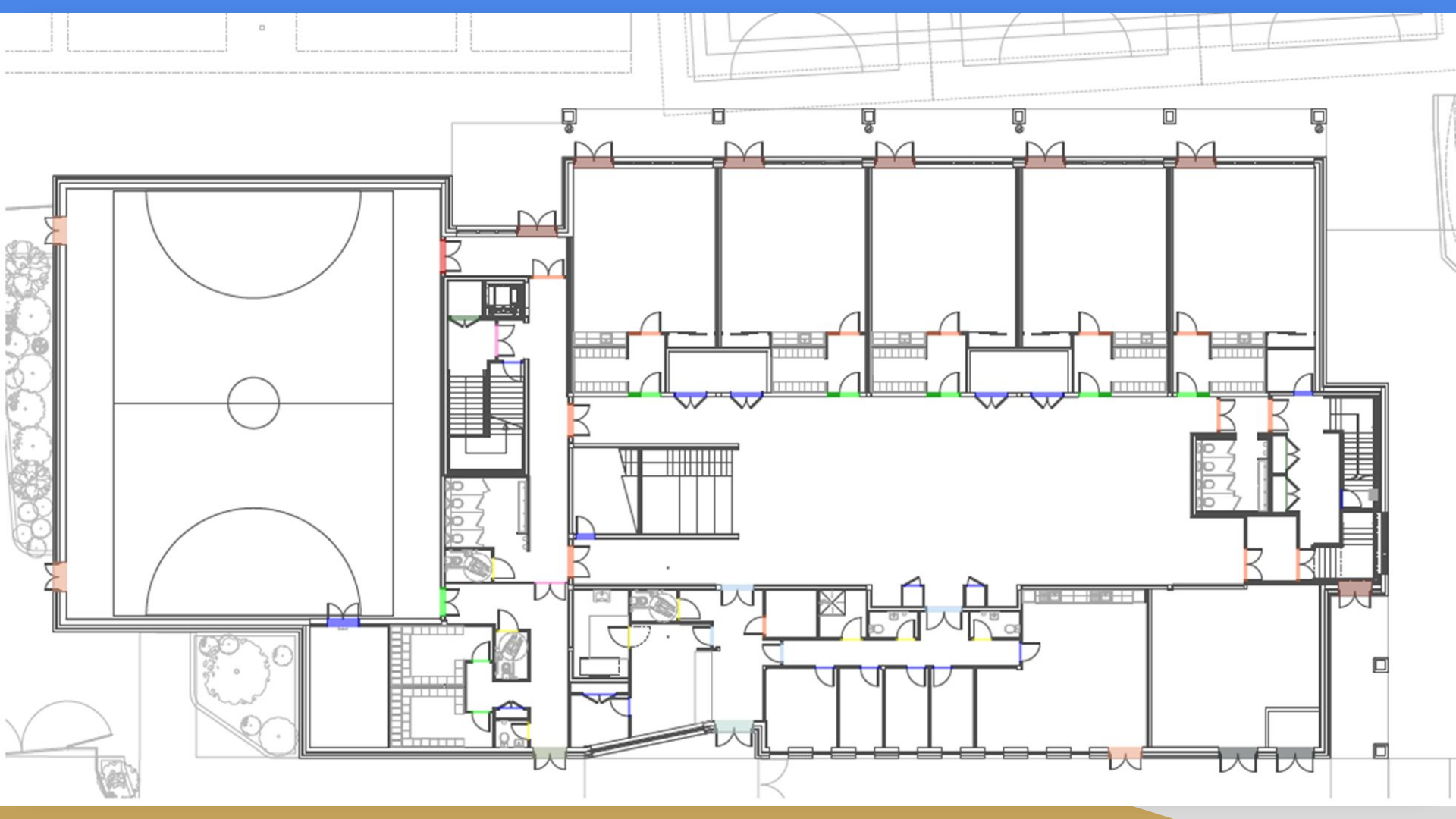




Aa Bb Cc Dd Ee Ff Gg
Hh Ii Jj Kk Ll Mm Nn
Oo Pp Qq Rr Ss Tt Uu
Vv Ww Xx Yy Zz





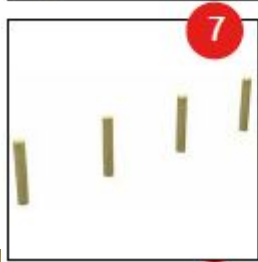


Between April and July it was hard to see many changes as the new build was covered in scaffolding and scaffolding netting.

The images below showing the plans being created for the new Muga and also playground and field equipment. Some field equipment will be installed in August 2024

New playground and field equipment

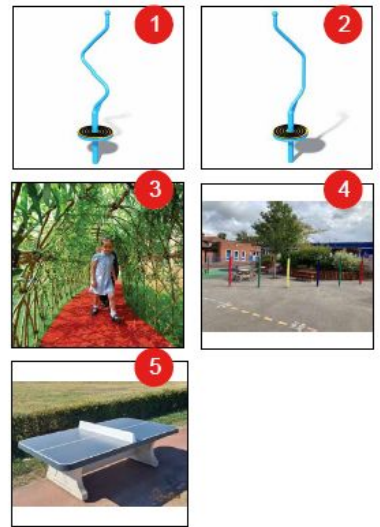




Items to be installed- The numbers match the previous image of the field.



Burlington Junior School - Play Equipment Plan





July 2024.

Site changes
on the days
after school
closed for
the summer









September 2024 - The old Arena





During August 2024 Burlington Road was closed to allow various services to be connected and upgraded in the road. This tunnel was dug underneath the road to allow access to these areas.



New field equipment installed during August 2024









The new Muga the day after the lines had been painted.

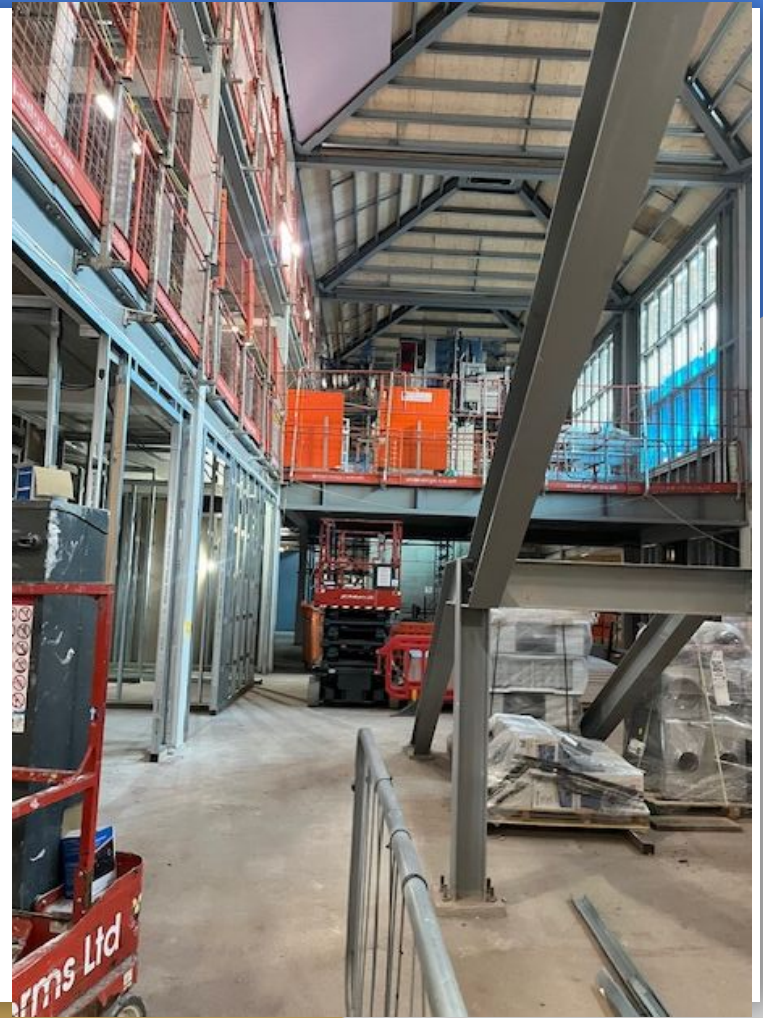




Senior staff at the school visited the site on 9th September 2024 4.30pm for a tour inside. This is the sports hall.



Looking into the Atrium. You can see the large staircase (also a seating area) on the right. You can also see the classroom over the Atrium with the orange safety fencing.



One of the
new
classrooms.



The roof terrace on the rear of the building. This is visible from the current Junior playground.



